



# "BOBBY" the Basket Ball Player

Designed by Arlene Smith  
ArleneDee.com  
Arlene@arlenedee.com  
480 264-6982



# Bobby the Basket Ball Player

## FF2018-Bobby Basket Ball

Project Pieces: Duncan Oh Four Bisque  
29873 Simplicity Small Bowl  
21437 12oz Mug  
21427 Coupe Salad Plate

Brushes: Duncan  
SB802 #1 Liner  
SB806 #6 Round  
SB806 #6 Shader  
SB807 #6 Fan Glaze

Color: Duncan

Concepts

CN181 Light Kiwi  
CN221 Light Blush  
CN232 Bright Briarwood  
CN244 Really White  
CN253 Dark Black  
CN263 Dark Grape  
CN281 Light Brown  
CN282 Bright Brown  
CN343 Dark Pink  
CN504 Neon Orange

Glaze

Pure Brilliance

Miscellaneous

Pencil  
Tissue Paper  
Ultra Fine Sharpie  
Ruler  
Contact Paper  
Palette for Paint  
Water Container  
Paper Towels  
Scissors

### **Preparing the pieces:**

1. Enlarge or reduce pattern to fit you project pieces.
2. Trace patterns on to tissue paper.
3. Using an ultra fine sharpie, retrace pattern onto pieces. Do not trace facial features at this time.
4. With a damp sponge wipe all pieces to remove dust and prepare for painting.
5. Place cup in center of plate and trace around with pencil
6. Trace bottom of cup and shoe pattern onto contact paper and cut out.
7. Place round piece over the circle you drew and the shoes just outside the circle. Refer to photo.

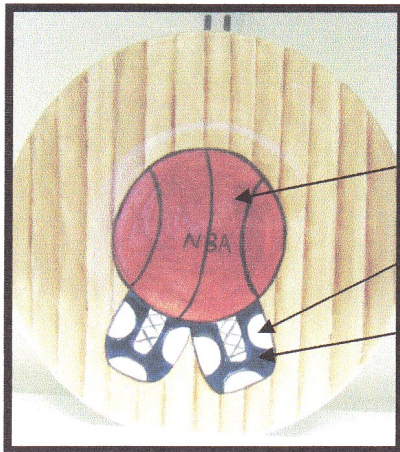
### **Painting the pieces:**

1. To plate apply 2 coats of Light Brown to top of plate.
2. Using a ruler mark stripe on plate about 1/2" to 3/4" apart, to resemble wood floor.
3. Using a shader load in Light Brown and side load in Bright Brown, keep Bright Brown to the left of lines and paint a shadow on each line. This will give it a wooden floor look.
4. With liner brush and Bright Briarwood, thinned like ink paint a line down each board.
5. Remove Contact paper. To ball, mix 50/50 Bright Brown and Bright Briarwood. Apply 2 coats to round section on plate.
6. Referring to photo to shoes apply 2 coats Dark Grape to purple areas and 2 coats of Really White to remaining areas.
7. With liner and Black thinned to an ink consistency out line ball, pull in stitched lines on ball and add "NBA".
8. Outline shoes and paint in shoe laces.

Bobby the Basket Ball Player  
FF2018-Bobby Basket Ball

9. Cup—Referring to photo, apply 3 coats of Light Blush to flesh areas.
10. Apply 2 coats of Really White to shirt.
11. Apply 2 coats of Dark Grape to short, avoiding the stripe on pants.
12. To strip on pants and shirt apply 2 coats of Neon Orange.
13. Using a liner brush around shirt neck and sleeve openings paint a line of Dark Grape, then paint a second line with Neon Orange.
14. To the "7" apply 2 coats of Dark Purple
15. Down the middle of the orange stripe on pants, paint a stripe using 2 coats of Dark Grape.
16. To inside of cup apply 2 coats of Neon orange.
17. Bowl— to hair area apply 2 coats of Light Brown.
18. To face area apply 2 coats Light Blush.
19. With a fan brush loaded in Bright Brown the wiped on towel, dry brush hair lightly. This will resemble hair.
20. Using tissue paper pattern of facial features, trace onto bowl.
21. Apply 2 coats Light Kiwi to iris of eyes.
22. Apply 2 coats of Dark Black to pupil of eyes.
23. Apply Dark Pink to light and a light wash of Dark Pink to cheeks
24. With Black and a liner brush, thin product to consistency of ink and detail the face, refer to photo.
25. Paint in lines on iris of eye, outline eye, pull in eye lashes.
26. Paint nose and outline lips.
27. With Really White and a dot maker or wooden handle end of brush, place highlights in each eye at 1 o'clock.
28. To inside of bowl apply 2 coats of Neon Orange.
29. Allow to dry and apply 2 coats of clear glaze.
30. When dry stilt and fire to shelf cone 06.





Plate

Mixture as per instructions

Really White

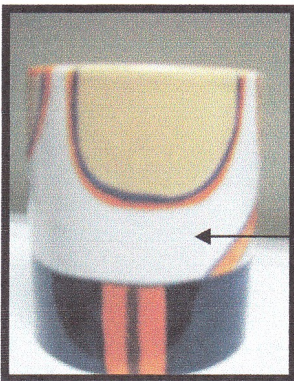
Dark Grape



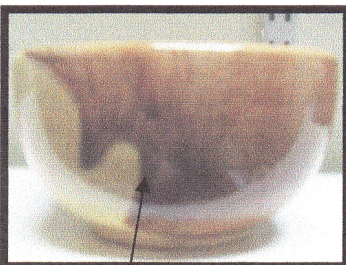
Front of cup.

Back of cup.

Side of cup



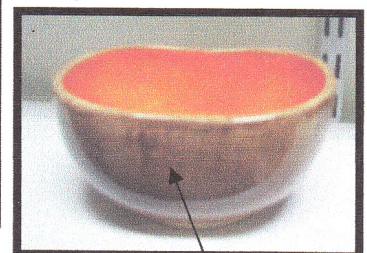
Side of Cup



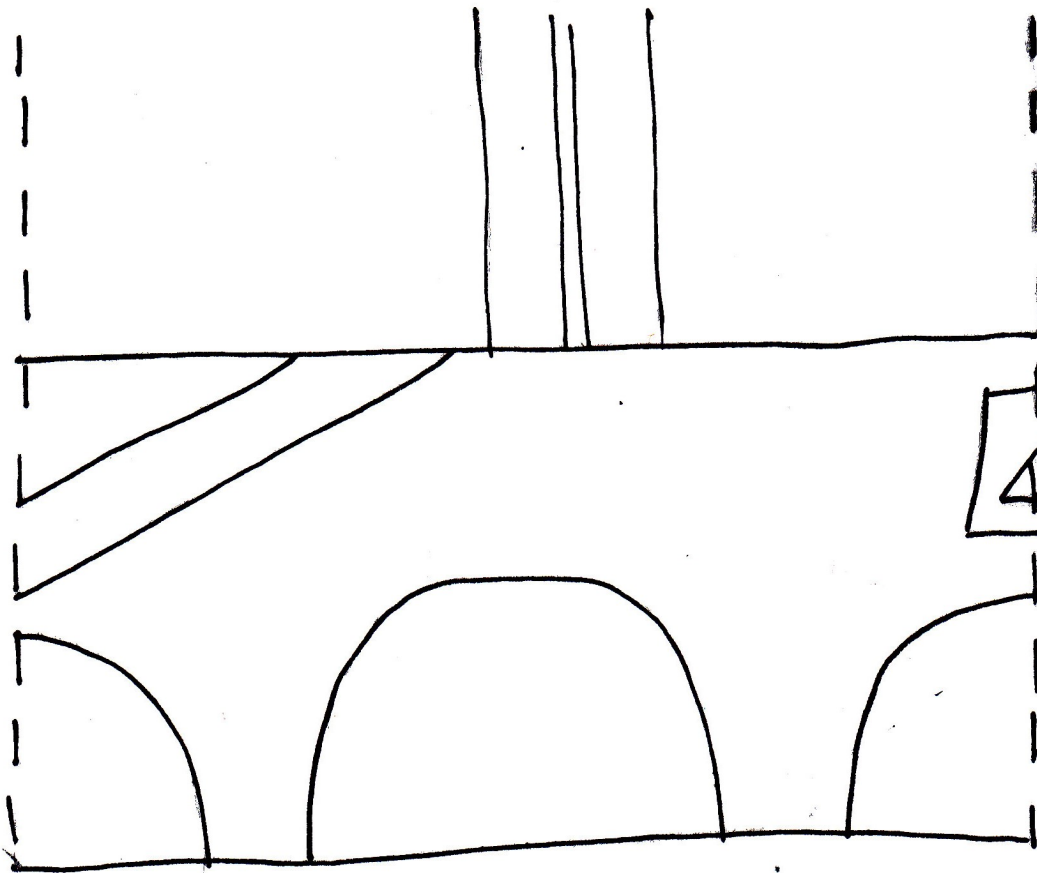
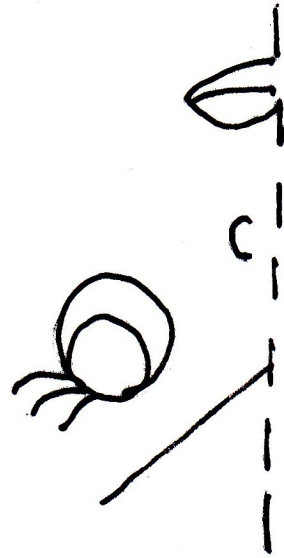
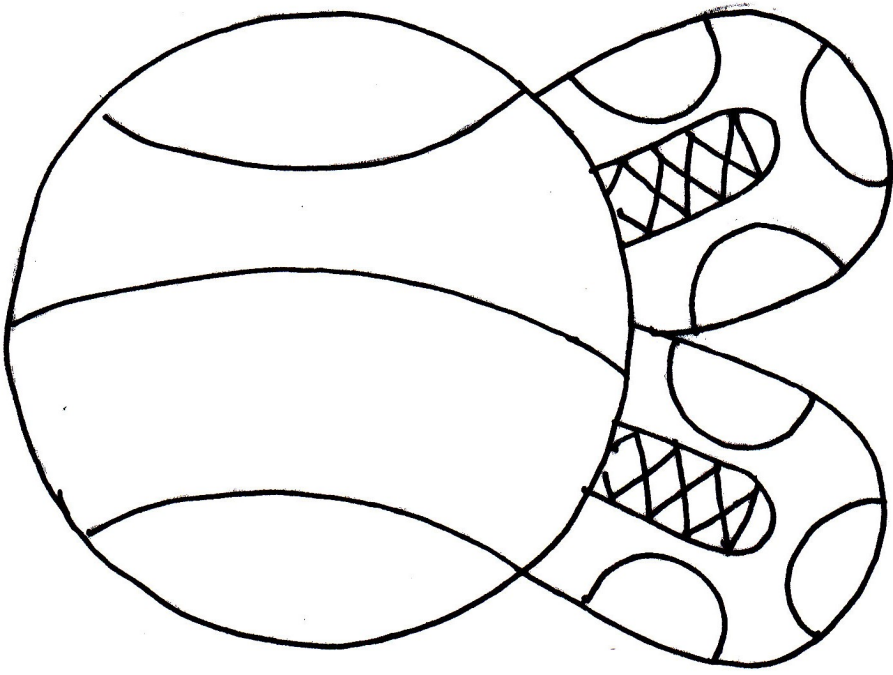
Side of bowl



Front of bowl



Back of Bowl



Hand-drawn signature and the number 13.

